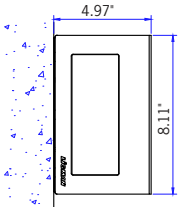


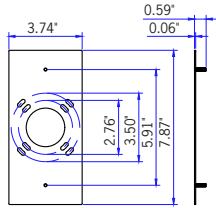
For Installation of Leeds Wedge Medium and Large wall surface down light LED.  
Model. ULEW-30011 & ULEW-30021

## Product drawing (dimensions)

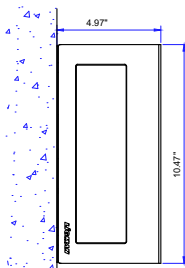
### SUITABLE FOR WET LOCATIONS



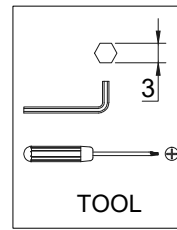
ULEW-30011



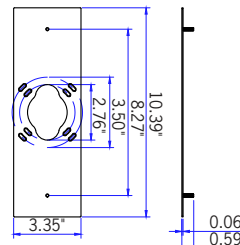
MOUNTING PLATE  
J-BOX 3", 4"



ULEW-30021



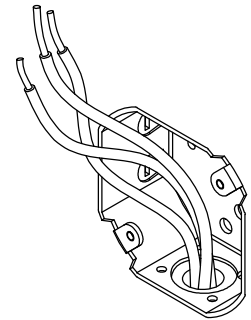
TOOL



MOUNTING PLATE  
J-BOX 3", 4"

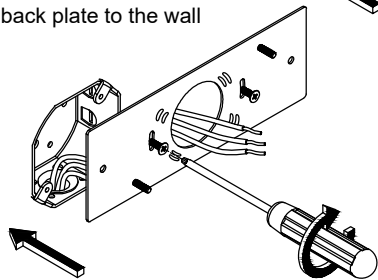
**NOTE** Mounts over a 3" or 4" Octagonal Junction box.

1



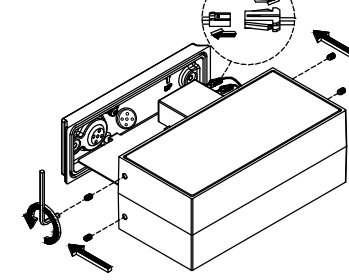
Position the body over the J Box and Secure the back plate to the wall

2

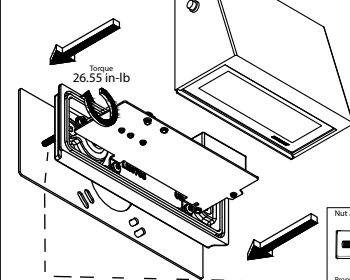


LED Module connection (black connector)

3

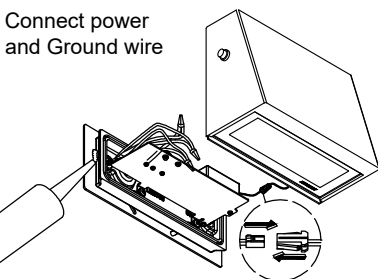


4



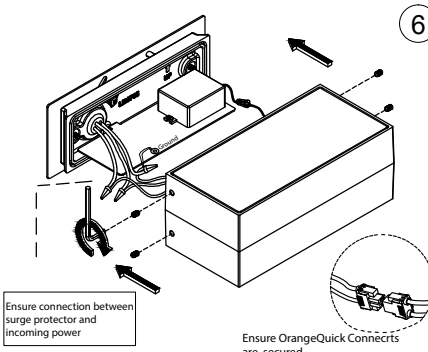
Connect power and Ground wire

5

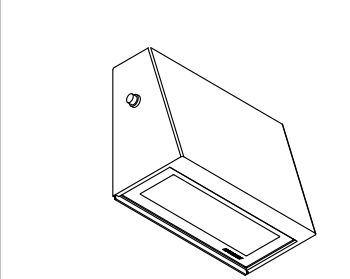


Ensure watertight seal using UL approved silicone based sealant.

6



7



## Notice to installer :

- 1.WIRING INSTRUCTIONS** Warning : RISK OF FIRE AND ELECTRICAL SHOCK. : FIXTURE MUST BE INSTALLED BY A QUALIFIED ELECTRICIAN ONLY>FIXTURE IS INTENDED FOR INSTALLATION IN ACCORDANCE WITH THE NATIONAL ELECTRICAL CODE, LOCAL AND FEDERAL CODE SPECIFICATIONS. DISCONNECT POWER BEFORE SERVICING.
- 2.This fixture has a VOLTAGE SPECIFIC BALLAST**,Check that the supply voltage is the same as the installed ballast voltage.

## Ligman Lighting USA

7144 NE Progress Court, Hillsboro  
Oregon, 97124, USA  
Tel : 503 645 0500

[www.ligmanlightingusa.com](http://www.ligmanlightingusa.com)

ISO 9001  
ISO 14001  
BUREAU VERITAS  
Certification



LLUS /28-01-2025-REV.1